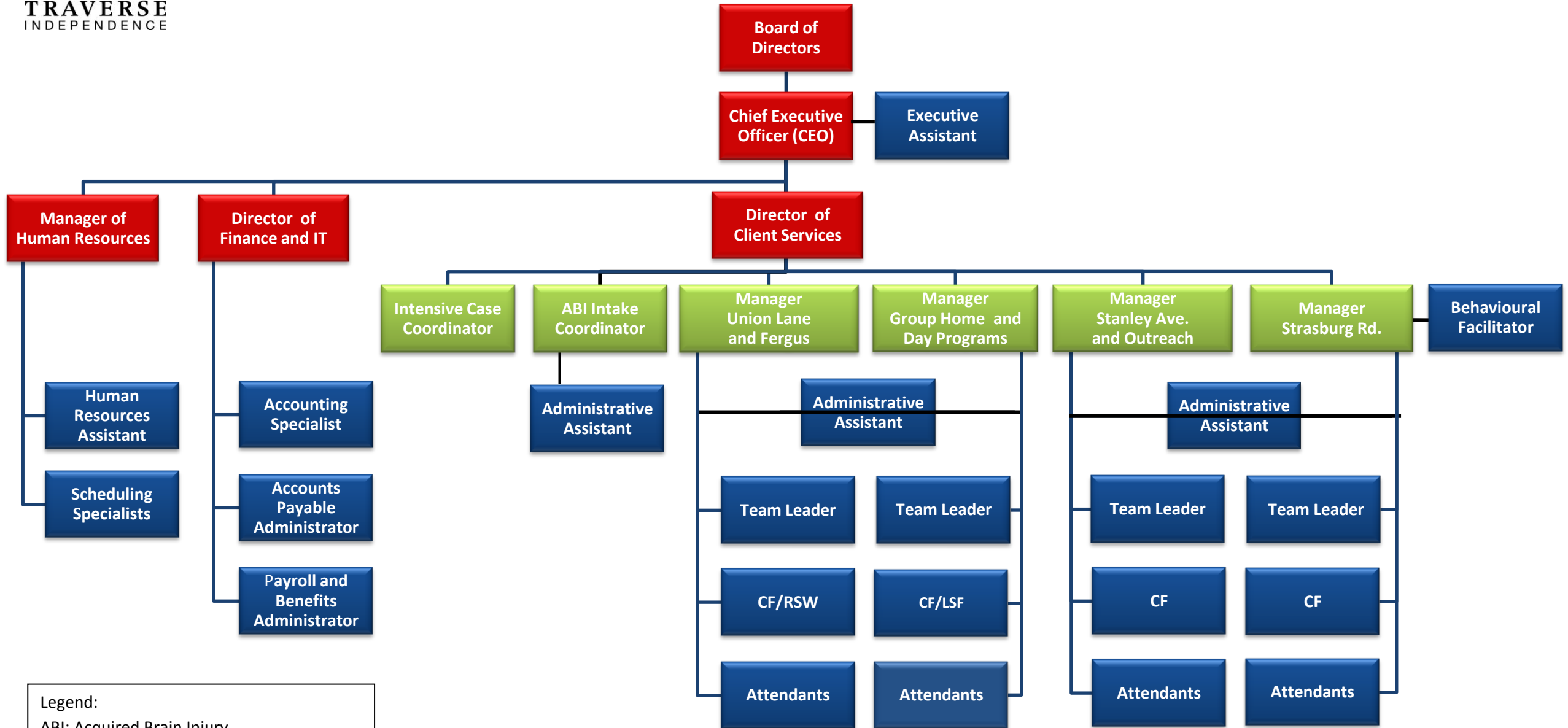




TRAVERSE INDEPENDENCE ORGANIZATIONAL CHART – AUGUST 2018



Legend:
 ABI: Acquired Brain Injury
 CEO: Chief Executive Officer
 IT: Information Technology
 CF: Community Facilitator
 LSF: Life Skills Facilitator
 RSW: Rehabilitation Support Worker